



44 Park Drive, London, W3 8NA

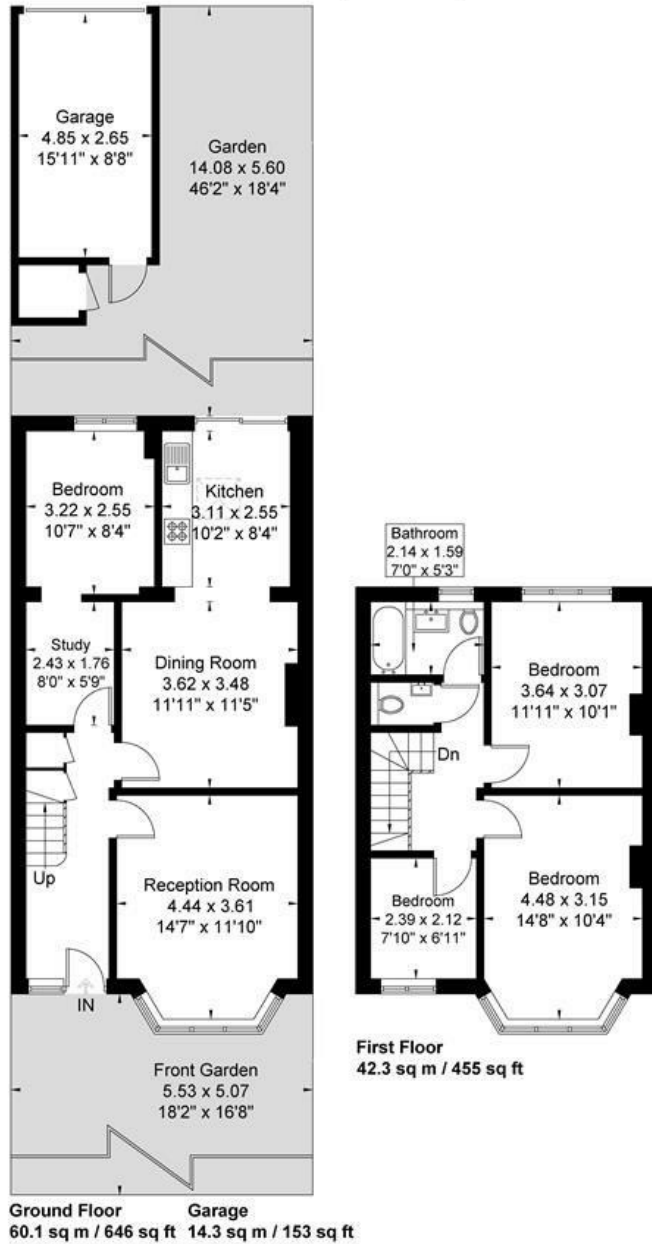
A large four-bedroom, mid-terrace home with garden and garage at rear situated in this sought after residential area known as the Gunnersbury Triangle, with easy access to Chiswick, Acton and Ealing.

- Terraced House
- Four bedrooms
- Garage
- No chain
- excellent order throughout
- Close to Acton Town station
- Potential for Loft Extension STPP
- Sought after residential area

£779,950

Park Drive

Approximate Gross Internal Area = 102.4 sq m / 1102 sq ft
 Garage = 14.3 sq m / 153 sq ft
 Total = 116.7 sq m / 1255 sq ft



Although every attempt has been made to ensure accuracy, all measurements are approximate.
 The floorplan is for illustrative purposes only and not to scale.
 © www.perspective.co.uk

Energy Efficiency Rating		
	Current	Potential
Very energy efficient - lower running costs		
(92 plus) A		
(81-91) B		
(69-80) C		
(55-68) D		
(39-54) E		
(21-38) F		
(1-20) G		
Not energy efficient - higher running costs		
England & Wales	EU Directive 2002/91/EC	